

**MILK BAR™**  
easy for you, healthy for them

A red rectangular box with a white border. Inside the box, the text "MILK BAR™" is written in large, bold, white letters. Below the text, the phrase "easy for you, healthy for them" is written in smaller white letters. At the bottom of the box, there are three cartoon illustrations of farm animals: a white goat, a brown cow, and a white sheep.

# The Range

2022 / 2023



[www.milkbar.co.nz](http://www.milkbar.co.nz)  
[hello@milkbar.co.nz](mailto:hello@milkbar.co.nz)

# Milk Bar™ Teat Range for calves



Milk Bar™ Revolution  
snap on nipple  
*For bottles*



Milk Bar™ Teat  
*For all calves*



Milk Bar™  
Training Teat  
*For training*



Milk Bar™  
Automatic Teat  
*For automatic feeders*



Calf Buddy™ Teat  
*For hutch buckets*

## Controlled milk flow for exceptional calf performance.



### Saliva is produced

Saliva boosts immunity.  
Saliva improves curdling and digestion.

### Diarrhoea is reduced

Calves absorb more lactose in the abomasum to reduce nutritional diarrhoea.

### Suckling instinct is satisfied

Satisfied calves don't need to cross suck so calves can be grouped without causing udder damage.

### Weight improves

Improved digestion equals heavier, more robust calves.

### Drip Resistant Technology

Superior teat performance.



# Milk Bar™ Teat

For over 30 years the Milk Bar™ Teat has been delivering specialized flow control to improve calf health.

Calves are heavier, healthier, and cost less to rear.

For optimal results, use one teat per calf. This ensures calves suckle and nurse at the best speed for maximum health benefits.

After weaning, discard the worn teat and replace with a new one for the next calf.

Milk Bar™ Teats are made from a 100% renewable resource. No oil or synthetic based rubber goes into our teats.



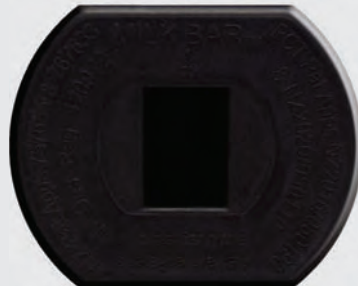
## Milk Bar™ Teat

Quantity: 10 per pack Code 900100

Quantity: 50 per pack Code 900112

Back Design: Rectangular hole

Feeder Type: All feeders.



## Milk Bar™ Teat - Round

Code 900100-R

Quantity: 10 per pack

Back Design: Round hole

Feeder Type: Feeders with tubes.



Milk Bar™ Teats with Drip Resistant Technology have great performance so why do I need to change teats?

It is important for calf health that milk is delivered at the right speed to optimize digestive health and performance.

As a teat ages, the rubber becomes softer and milk flow increases. As a calf approaches weaning the developed digestive system can manage this slightly increased flow but for young calves a faster flow impacts health and can result in cross suckling and nutritional diarrhoea.



# Milk Bar™ Training Teat

Specifically formulated to support very young or weaker calves.

The teat design encourages the correct suckling action so enough saliva is produced for boosted immunity.

Use a bottle or feeder with a Milk Bar™ Training Teat for the first two or three days.

When calves are fully trained, move them to the Milk Bar™ Teat for optimum calf performance.

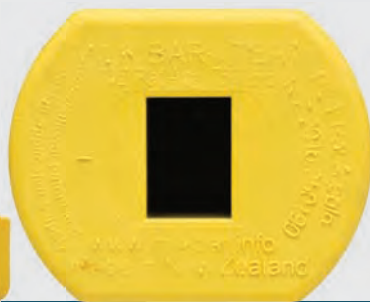
## Milk Bar™ Training Teat

Code 900300

Quantity: 10 per pack

Back Design: Rectangular hole.

Round back available upon request.



### Research TIP !

Saliva provides Pre-Gastric LIPASE which is necessary for the digestion of fats.

"Pancreatic Lipase activity is highest in calves fed with a teat vs bucket"  
(Nelson & al, 1977)



Calves are drinking well on the Milk Bar™ Training Teats with **Drip Resistant Technology** so why should I change to Milk Bar™ Teats?

Getting the first few feeds right are critical. The calf needs to suckle properly to produce saliva. Saliva has antimicrobial properties and combined with the iGg in the colostrum, helps to boost immunity.

The softer rubber compound is specific for training, but the flow is a little faster than the Milk Bar™ Teat. Changing to the more controlled flow of the Milk Bar™ Teat safeguards calves against the harmful effects of fast feeding.

Under normal farm conditions Milk Bar™ Teats with DRT do not drip within a reasonable teat life expectancy. Performance specifications are believed to be reliable but are not verified across individual farm practices. As farm practices and natural raw materials may vary, Milk Bar™ can take no responsibility for teats that may drip occasionally.



# Milk Bar™ Automatic Teat

Controls the flow and satisfies the suckling instinct so calves are calm and settled.

Lasts to 600L to 700L to reduce teat replacements.

Side wings to visually check teat alignment.

Maximum saliva production to boost immunity and aid digestion.

Fits Automatic Machines with a 38mm teat station.



## Milk Bar™ Automatic Teat

Code 900600

Quantity: 10 per pack

Back Design: 38mm

Feeder Type: Automatic Feeders



How can I implement the Milk Bar™ Automatic Teat into my system?

Starting with Milk Bar™ from day one gives calves a health boost and is easy to implement. For best results:

Day 1 - 3 Use a Milk Bar™ Training Teat in either a bottle or single feeder.

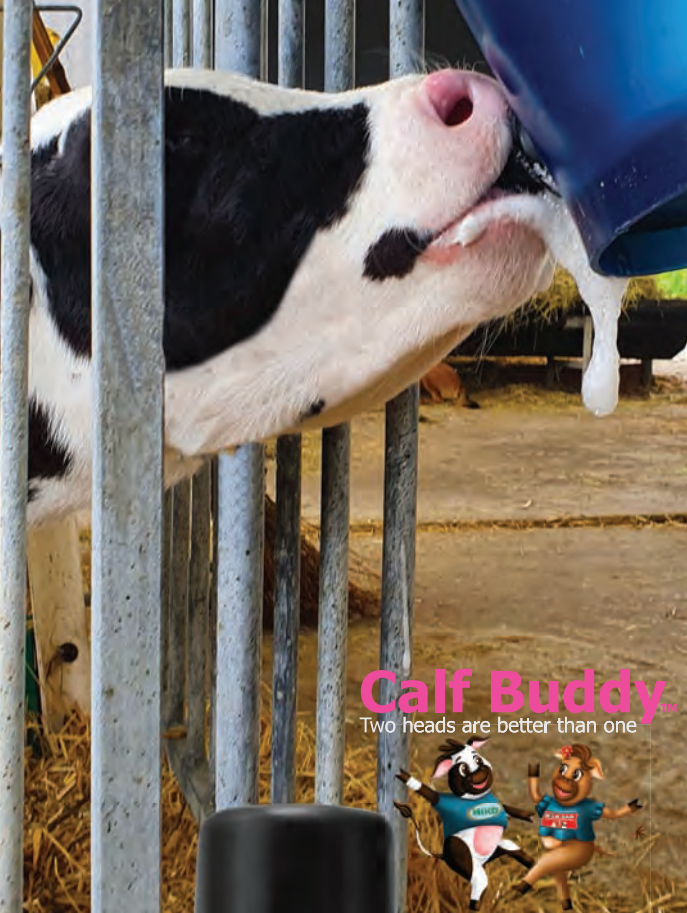
Day 4 - 14 Use the Milk Bar™ Teat in either a single or group feeder.

Calves can be in singles, pairs or groups.

Day 15+ Transition the small group to the Automatic Feeder fitted with new Milk Bar™ Automatic Teats.

Replace teats when milk flow has increased or at around 600 - 700 L.

NOTE: Transfer young calves to the automatic feeder when the teat has been changed to a new teat.



# Calf Buddy™ Teat

A Milk Bar™ Teat front end to control the flow and super hygienic 1-Click 38mm connector that fits any standard hutch bucket.

No valves or threads for an ultra-hygienic connection system.

Side wings to visually check teat alignment.

Calves enjoy the controlled flow, make lots of saliva and are more satisfied after feeding.

Use in any hutch bucket for heavier, healthier calves!



## Calf Buddy™ Teat

Code: 9000000  
 Quantity: 10 per pack  
 Back Design: 38 mm  
 Feeder Type: All hutch buckets



## Calf Buddy™ Connectors

Code: 9000001  
 Quantity: 10 per pack



## Calf Buddy™ Starter Pack

Code: 9000002  
 Calf Buddy Teats: 10  
 Calf Buddy Connectors: 10



The Calf Buddy™ Teat is so easy to install into any hutch bucket!  
 No threads to get dirty and no ball valve to disrupt the milk flow.

Simply click the teat and connector together and pull through your hutch bucket.

It is vitally important to use a connector with no ball valve. Valves increase milk flow which can lead to digestive problems.





# Milk Bar™ Revolution Snap On Nipple

A ground-breaking innovation for farms using bottle systems!

The Milk Bar™ Revolution has five slits positioned on a circle to control the flow no matter which way the bottle is placed.

Extremely durable with a superior life span compared to any other bottle nipple.

Calves drink at the right speed, produce lots of saliva and are very content after feeding.



## Milk Bar™ Revolution Snap On Nipple

Code 900700

Quantity: 10 pack or 250 pack (Code 900710)

Back Design: Snap on

Feeder Type: Snap on bottles



Easy to use, long lasting and with an extraordinary improvement in calf performance, the Milk Bar™ Revolution Snap On Nipple is a must have for farms using bottle systems!

Snaps onto bottles easily, but thanks to the unique, natural rubber formulation, stays securely in place allowing you to carry full bottles by the nipple.

Wash with a gentle detergent like dish washing liquid.





# Milk Bar™ Single Feeders

Hook systems to suit any style of rail, gate or hutch.

Various milk volumes to suit any system.

Robust and easy to clean.

Milk Bar™ Single feeders can be used for both individually fed calves or calves housed in the 'Buddy System'.

## Milk Bar™ 1EL

### Hangs outside the pen

Code 910130

Adjustable, 100% lockable hooks.

Calves cannot bunt the feeder off the rails.

Locks to rails up to 75mm.

Extremely durable.

Volume: 8L

Weight: 700 gm

Length: 290 mm

Height: 400 mm

Width: 270 mm

Hooks: Ezi Lock



## Milk Bar™ 1EL

### Hangs inside the pen

Code 910131

As above but hooks are set to sit inside the pen,

giving the calves a solid wall to push against to reduce feeder movement.

Ideal in pens where calves have good space.



Milk Bar™ 1 EL feeders flip upside down for advanced functionality!



### Milk Bar™ 1

Code 910100

Fitted with a lid to reduce flies.

Self locking catch secures the feeder.

Use on rails of 25mm or less.

Extremely durable.

Volume: 3.2 L

Weight: 700 gms Height: 210 mm

Length: 210 mm Width: 210 mm

Hooks: Moulded 25mm



### Milk Bar™ 1 4L

Code 910120

Marked gradients every 250 ml.

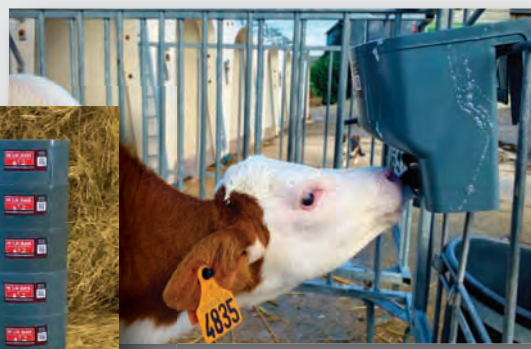
Use on rails 25 mm or less.

Volume: 4 L

Length: 210 mm Weight: 700 gms

Width: 210 mm Height: 210 mm

Hooks: Moulded 25 mm



Interstacks with teat fitted!

Easy change teat attachment!

### Milk Bar™ Adjustalock

Code 910102

The Milk Bar™ 1 Adjustalock

secures both the Milk Bar™ 1

and the Milk Bar™ 1 4L to gates.

Secure the Adjustalock at 80cm and teat is at the correct height for even better calf performance!



### Milk Bar™ Euro Bucket

Code 901101

Transparent to easily sight the milk level.

Fits on standard hutch brackets.

Volume: 9 L

Length: 290 mm Weight: 700 gms

Width: 270 mm Height: 400 mm

Hooks: Slots for hutch brackets

Handle: Stainless steel

Optional extra lid: Code 901102



### Milk Bar™ Trainer Bottle

Code 901100

Fitted with Milk Bar™ Training Teat for

new born calves and support weak calves.

Volume: 3 L

Weight: 600 gms Height: 150 mm

Length: 350 mm Width: 120 mm

Handle: Carry handle





# Milk Bar™ Vitality System

For optimum health calves should start with a new Milk Bar™ Teat and stay with that teat, or a teat of a similar age until weaning.

The Vitality Management System gives you a simple method to ensure all calves are drinking at the correct speed until weaning.

Just match the teat clip to the hutch clip and you are always feeding your calves from the correct teat!

## Milk Bar™ Vitality 3 L Bottle System - 5 Pack

Code 901200

## Milk Bar™ Vitality 4 L Bottle System - 5 Pack

Code 901207

Contains:

- 5 Milk Bar™ Vitality Bottle 3 L or 4 L
- 5 Milk Bar™ Vitality Bottle Cap
- 5 Milk Bar™ Vitality Bottle Chute
- 5 Milk Bar™ Vitality Aligning Socket
- 1 Milk Bar™ Colostrum Teat (training teat)
- 10 Milk Bar™ Teat
- 10 Milk Bar™ Vitality Teat Clips (one of each colour)
- 10 Milk Bar™ Vitality Vitality Tags (one of each colour)



Each pack of Milk Bar™ Vitality System comes complete for five hutches or pens. There are extra Milk Bar™ teats and coloured teat clips if you need them. When setting up your farm, allow one bottle per hutch, for example, for 10 hutches you will need two packs of the Vitality System.

**1.** Fit a NEW Milk Bar™ Teat to the Teat Clip.

**2.** Snap the Teat Clip into the Bottle Cap and screw to the bottle.

**3.** Attach a Vitality Tag of the same colour as the Teat Clip to the calf's pen, hutch or chute.



The Chute secures the bottle into the correct position.



Single & Vitality  
Feeders System



# Milk Bar™ Group Feeders

Feeders inter-stack with teats fitted making handling feeders quick and easy.

Easy to clean with sleek lines. No 'lip' around the top of the feeders, no threads, no valves.

Low teat channel reduces milk waste.

Hook systems to suit all hutches, pens or rails.

Milk Bar™ feeders come fully assembled with teats fitted and ready to use.



## Ezi Lock Hooks

100% bunt proof and adjust to fit gates up to 75 mm rails!  
Feeders hang upside down to drain.

Replacement hook set available:  
Code 950200



## Aluminium Hooks

Used on wider feeders to make hanging easy.  
Pre-drilled to adjust width.

Replacement hooks available:  
Code 950250



## Moulded

Moulded into the feeder to fit 25, 45 or 50 mm rails.  
Feeders with moulded hooks also have a self locking catch.

## Cleaning



**Daily:** Rinse feeders with cold water.

**At least twice a week:**  
Scrub feeders with hot water (50°C) and dish washing liquid.

Group feeding calves significantly reduces time and labour, however cross suckling can be an issue. Calves fed from a fast teat, or a bucket will suckle each other's navels and udders causing infections and long-term damage.

The Milk Bar™ Teat resolves this issue so calves can be group fed with minimal risk. The controlled flow of the Milk Bar™ Teat satisfies the suckling urge so after feeding, calves are quiet and satisfied.

### Milk Bar™ 5

Code 910200

Volume: 15 L  
 Weight: 2 kg  
 Length: 300 mm  
 Height: 360 mm  
 Width: 300 mm  
 Hooks: Moulded 25-40mm



### Milk Bar™ 5EL

Code 910203

Volume: 36 L  
 Weight: 3 kg  
 Length: 700 mm  
 Height: 400 mm  
 Width: 300 mm  
 Hooks: Ezi Lock



### Milk Bar™ 6

Code 910300

Volume: 36 L  
 Weight: 3 kg  
 Length: 700 mm  
 Height: 400 mm  
 Width: 300 mm  
 Hooks: Ezi Lock



### Milk Bar™ 10

Code 910400

Volume: 60 L  
 Weight: 5 kg  
 Length: 850 mm  
 Height: 430 mm  
 Width: 460 mm  
 Hooks: Ezi Lock



### Milk Bar™ 12

Code 910500

Volume: 90 L  
 Weight: 8 kg  
 Length: 1.2 m  
 Height: 460 mm  
 Width: 430 mm  
 Hooks: Aluminium



### Milk Bar™ 20

Code 910800

Volume: 120 L  
 Weight: 12 kg  
 Diameter: 900 mm  
 Height: 900 mm  
 Solid base stops calves pushing the feeder over.



### Milk Bar™ 13

Code 910600

Volume: 100 L    Height: 330 mm  
 Weight: 10 kg    Width: 200 mm  
 Length: 2.12 m    Handle: Two large moulded handles  
 Four aluminium hooks keep the feeder secure



Available on request!

Milk Bar™ Teats have no valves so for a great clean, simply bend the teats over with your brush until you see a bubble pop back into the cleaning water.

**Do not remove teats for cleaning!**



We use 100% natural rubber in our teats. Some detergents are too harsh on the rubber and can cause it to degrade. Using a simple dish washing liquid is ideal.

If you have to wear gloves to wash the feeders, the detergent is too harsh!



# Milk Bar™ Compartments

Compartment feeders are a useful tool for sorting calves into groups.

Ideal for high concentrate, low volume systems.

The Milk Bar™ Teat evens out drinking speeds to reduce break away behaviour and bunting. Another great benefit of controlling the flow!

Compartments hold 2.5L and are easy to clean.

## Milk Bar™ 2 Compartment

Code 912100

Volume: 2.5L ea.  
Total Volume: 14 L  
Weight: 2 kg  
Length: 400 mm  
Height: 400 mm  
Width: 250 mm  
Hooks: Ezi Lock  
Handle: Finger grips



## Milk Bar™ 3 Compartment

Code 912200

Volume: 2.5L ea  
Total Volume: 19 L  
Weight: 3 kg  
Length: 500 mm  
Height: 400 mm  
Width: 250 mm  
Hooks: Ezi Lock  
Handle: Finger grips



## Milk Bar™ 4 Compartment

Code 912250

Volume: 2.5L ea  
Total Volume: 24 L  
Weight: 3.5kg  
Length: 660 mm  
Height: 400 mm  
Width: 300 mm  
Hooks: Ezi Lock  
Handle: Finger grips



## Milk Bar™ 5 Compartment

Code 912300

Volume: 2.5L ea  
Total Volume: 30 L  
Weight: 4.5 kg  
Length: 850 mm  
Height: 390 mm  
Width: 300 mm  
Hooks: Ezi Lock  
Handle: Finger grips



## Milk Bar™ 10 Compartment

Code 912400

Volume: 2.5L ea  
Total Volume: 70 L  
Weight: 11 kg  
Length: 1.13 m  
Height: 430 mm  
Width: 480 mm  
Hooks: Aluminium  
Handle: Finger grips and cut out handle



## Teat Height Matters!

Hanging feeders so teats are at 'udder height' is important.

**For your calves:** when calves drink at 'udder height' the oesophageal groove prevents milk entering the airways or rumen. This helps to prevent respiratory problems and acidosis.

**For your feeders:** When feeders are hung too high, calves rub their teeth on the bottom of the feeder which can cause damage.

For best results, place feeders so teats are 60 - 65 cm from the ground!





Patent Application NZ793399

# Milk Bar™ Ad Lib Feeders

A controlled milk flow in high volume ad lib systems is critical to prevent nutritional diarrhoea. The Milk Bar™ Ad Lib Range allows you to totally control milk flow by moving the teat position.

Start young calves with the teats fitted at the bottom of the feeder. As the teats start to wear and the drinking speed increases, place the teats at the top and insert the tubes.

Milk Bar™ Ad Lib Feeders come with Milk Bar™ Teats, blanking plugs, tubes, connectors, and a lid. Larger models available in 2023!



For best results, start young calves with new Milk Bar™ Teats fitted at the bottom of the feeder.



After 2 - 3 weeks of milk pressure, the teats will start to soften and calves maybe drinking a little quicker, or that the teats are starting to drip.

When this happens, transition the teats to the top holes, insert the tubes and use the blanking plugs to seal the bottom holes. Now your calves will drink with a controlled flow until weaning.

After weaning, replace the worn teats with new Milk Bar™ Teats, wash the plugs and tubes and you are ready for the next group! It is important to use new teats for the new calves to achieve the correct drinking speed for good health.

**Cleaning:** Use a dish washing detergent to remove the milk fat and protein build up. Once a week, remove the tubes and hot wash them.



## Milk Bar™ Ad Lib 4

Code 910900

Volume: 36 L

Weight: 3 kg

Length: 700 mm

Height: 400 mm

Width: 300 mm







# Milk Bar™ XL Range

These feeders have a wider teat spacing to accommodate larger breeds with wider heads or shoulders.

With a minimum volume of 7.5 L per calf, the Milk Bar™ XL Range is also a great solution for high volume systems.

The controlled flow of the Milk Bar™ Teat allows you to use a high volume system while minimising the risk of milk diarrhoea associated with higher volumes and fast feeding.

## Milk Bar™ XL 2

Code 910179  
Volume: 15 L  
Weight: 2 kg  
Length: 300 mm  
Height: 360 mm  
Width: 300 mm  
Hooks: 25 - 40mm



## Milk Bar™ XL 4

Code 910180  
Volume: 36 L  
Weight: 3 kg  
Length: 700 mm  
Height: 400 mm  
Width: 300 mm



## Milk Bar™ XL 8

Code 910330  
Volume: 60 L  
Weight: 5 kg  
Length: 850 mm  
Height: 430 mm  
Width: 460 mm



## Milk Bar™ XL 10

Code 910450  
Volume: 90 L  
Weight: 8 kg  
Length: 1.2 m  
Height: 460 mm  
Width: 430 mm



**User Tip!** Milk Bar™ Feeders sit tight against the rail

When group feeders tip forward, the calves at the side of feeder get less milk.

Milk Bar™ feeders sit tightly to the rail and lock into place so all calves have an equal share to the last drop.





## Calf Buddy™ Feeders

Clean lines, high volumes, the Calf Buddy range is perfectly designed to fit any farm. Using hutches? Great, we have a gorgeous hutch bucket. Calves in pair systems? Perfect, we have a high volume 2 teat feeder. Want larger groups, excellent, the Calf Buddy 5 is ideal.

No threads, no ball valves. Calf Buddy™ Teats and feeders are easy to keep hygienic



The Calf Buddy™ Teat has the ideal milk flow for healthy digestion. Calves look better and feel great!



Calf Buddy™ feeders are easy to use, clean and last for years.



### Calf Buddy™ 1

Code: 900050  
Volume: 9 L  
Semi-transparent.  
Stainless steel handle.  
Marked litre gradients.  
Slots onto hutch brackets.



### Calf Buddy™ 1 Lid

Code: 900051

### Calf Buddy™ 2

Code: 900052  
Volume : 20 L  
Height : 39 cm  
Length : 42 cm  
Width : 31.5 cm



### Calf Buddy™ 2 Lid

Code: 900053

### Calf Buddy™ 5

Code: 900054  
Volume : 50 L  
Height : 40 cm  
Length : 76.5 cm  
Width : 37 cm



### Calf Buddy™ 5 Lid

Code: 900055

Calf Buddy™ Feeders come fitted with Calf Buddy™ Teats and connectors. Controlled flow and super hygienic connection system!

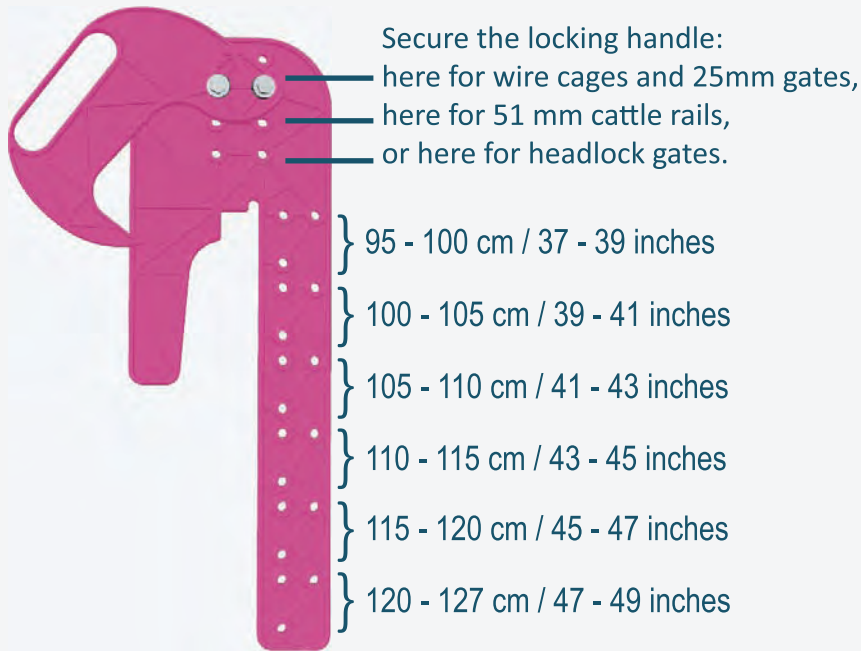
See page 6 for more information.



Teats have a forward orientation, so calves are comfortable in hutch pens!

# The Calf Buddy™ Hook System

Designed to fit wire cage, 25 mm box steel, 50 mm pipe rails and headlock gates, The hook is height adjustable so calves drink at the perfect height no matter what rails you use. The unique locking 'swivel handle' is comfortable to use and secures the feeders in place. For a bespoke hook system to work perfectly on your farm, just measure and attach!



## Get the height right:



Standing on the calf side of your pen, measure the rail height. Bolt the hook to the feeder using the marked holes.



Teats will now be around 60- 65 cm from the ground, perfect!

## Set the locking handle:



Determine your rail type. Attach the locking handle to the hook according to the rail.



Perfect height, and locks perfectly onto your rails!

NZ Pat Apps 757655, 767633, 727000, 787005. NZ Des Reg. 420972 PCT Patent Applications NZ2016/050190 & NZ2020/050110 International Patents and Designs pending or apply.

[www.calfbuddy.com](http://www.calfbuddy.com)

# NEW for 2023!

A range of light weight lids with ergonomic handles.

Keeps dust, bedding, flies (and cats) out of the milk.

Helps maintain milk temperature in the winter.

The finishing touch to your Milk Bar™ feeders!



# Parts and Accessories

## Milk Bar™ Pen Waterer 1

Code 935100

Volume: 8 L

Weight: 3.5 kg

Length: 330 mm

Height: 575 mm

Width: 275 mm

Hooks: Screws to wall

The Milk Bar™ Pen Waterer 1

keeps water free from dust, bird, and animal poop.

Fitted with a 20 mm riser to connect to your water supply. Good for calves, goats, and kids!



## Munch Trough

Code 930700

Volume: 20 kg

Weight: 4 kg

Length: 800 mm

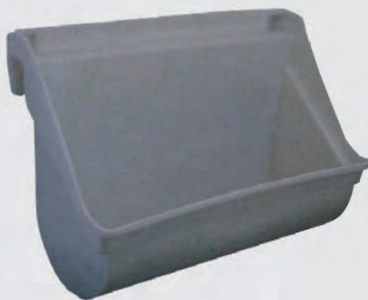
Height: 530 mm

Width: 300 mm

Hooks: Moulded 50 mm

A very convenient trough that can be used inside or out.

The high back and sides prevents spillage.



## Milk Bar™ Mineral Protector

Code 929002

Weight: 3 kg Length: 330 mm

Height: 575 mm Width: 275 mm

Hooks: Screws to wall

Holds a standard lick block or loose mix.

Sloping top prevents climbing.

Perfect for goats!!



## Milk Bar™ Plug

Code 900109

The new and improved

Milk Bar™ Plug is perfect

for sealing spare teat holes!



## Milk Bar™ Teat Tool

Code 950400

Makes changing teats easy!

Just place the Teat Tool around the teat and pluck it out.

Fast and easy!



## Ezi Lock Hook Set

Code 950200

Quantity: 2 per pack.

Replacement hook set

for all feeders with

Ezi Lock Hooks.



## Ezi Lock Spring, bolt and catch

Code 950204

Quantity: 2 per pack.

Use this if the hooks are fine but the locking mechanism is worn.



## Milk Bar™ Aluminium Hooks

Code 950250

Quantity: 2 per pack.

Replacement hook set that can be retro fitted to feeders fitted with Ezi Lock Hooks.



## Milk Bar™ Training Bottle Lid

Code 962500

Quantity: 1 per pack.

Replacement lid for both the lamb and calf Training Bottles.





# Milk Bar™ Calf Covers

Absolute top quality, anatomically designed cover for calf safety and comfort.

Sturdy plastic clips and adjustable leg/ belly straps.

Extremely durable, 600 denier, waterproof and breathable material with a cosy 200 gm fill.

A rubber layer within the coat is a physical barrier that water cannot penetrate but has tiny holes that allows air to circulate so calves do not get damp.

Wash at 40 degrees between calves.

Using a Milk Bar Calf Cover helps the calf to stay warm without using valuable calories. When temperatures drop below 10 C, a young calf will start to feel cold and burn energy to maintain body temperature. A study in the UK compared 40 Holstein calves reared from December through February. 20 received calf jackets from 2 to 12 weeks of age, and 20 did not. The researchers found that calves wearing jackets gained an average of 5.2 kg more weight!

## Milk Bar™ Calf Cover

M Code: 970010

L Code: 970011

XL Code: 970012

In a gorgeous teal, your calves will be warm and dry for years to come.



Sturdy clips.



### Size guide:

M - 24" to fit Jersey's  
L - 28" to fit Holstein's  
XL - 32" to fit large  
Holstein/ beef calves.

Who says functional has to be boring! Why not brighten up your winter feeding, your calves will not only be super warm and comfortable but will look utterly gorgeous in these designs!

## Milk Bar™ Moolabelle

M Code: 970013

L Code: 970014

XL Code: 970015



## Milk Bar™ Festive Flora

M Code: 970016

L Code: 970017

XL Code: 970018

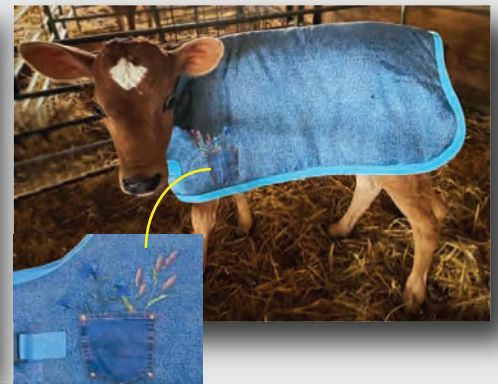


## Milk Bar™ Denim Daisy

M Code: 970019

L Code: 970020

XL Code: 970021



# Using the Milk Bar™ System

## Follow the Teat & Colour Code

Some farms group calves from day one and some keep them separate till weaning.

Some do a mixture of individual and then into groups and now there is a wave of research supporting the Buddy System where two calves are housed together from birth.

The important thing is to choose a system that best makes use of your available space and man power.

Milk Bar™ adapts to all these housing systems and we have developed the Follow the Teat System to help you control and monitor the feeding speed so your calves can fulfil their potential.

## Individual to group

The key to successfully raising healthy calves in this popular system is to control the age of the teat for each calf.

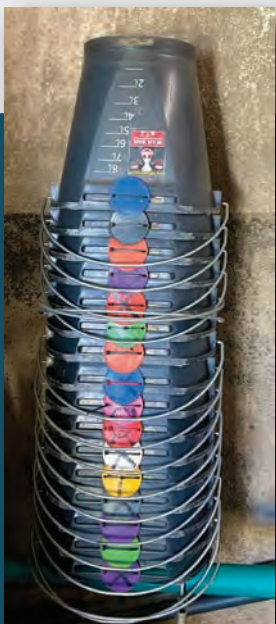
The Follow the Teat System allows for farms of all sizes to successfully make groups of calves who will be feeding at a similar speed while controlling the drinking speed from birth to weaning.

### Protocol:

1. Fit a new Milk Bar™ Teat to your Milk Bar™ single feeder.  
Use the Milk Bar™ Colour Code system and tag the feeder and the hutch.  
This feeder stays with this calf for the training period.
2. When you have enough calves to make a group, remove the Milk Bar™ Teat from each of the single feeders and insert them into the group feeder.  
This group feeder now stays with these calves until weaning.
3. Place a new Milk Bar™ Teat into the now unneeded Milk Bar™ single feeder ready for the next calf.

**Important:** Ensuring calves get enough milk volume is important. Make sure calves have no more than a two week age difference in your groups.

Bigger calves need more milk so it's best to group large calves together.



**TIP!** Use Milk Bar™ Colour Code to match feeders with calves!

- |              |                          |
|--------------|--------------------------|
| Code: 901261 | Yellow Tags (10 pcs)     |
| Code: 901262 | Orange Tags (10 pcs)     |
| Code: 901263 | Red Tags (10 pcs)        |
| Code: 901264 | Pink Tags (10 pcs)       |
| Code: 901265 | Dark Blue Tags (10 pcs)  |
| Code: 901266 | Light Blue Tags (10 pcs) |
| Code: 901267 | Green Tags (10 pcs)      |
| Code: 901268 | Grey Tags (10 pcs)       |
| Code: 901269 | White Tags (10 pcs)      |
| Code: 901270 | Black Tags (10 pcs)      |

# Individual till weaning

The key to success in this system is to keep the same Milk Bar™ Teat with the same calf from birth till weaning.

This means that when the calf is young, she is feeding from a new Milk Bar™ Teat where the controlled flow is so crucial to boost immunity. If you swap feeders between calves there is a danger of giving a feeder to a young calf that has an older, more worn teat. This teat will be feeding at a slightly faster flow which the older calf can manage but, for the young calf it can lead to health problems we want to avoid!

It's simple to use the Milk Bar™ Colour Code system. At a glance you can make sure that each calf has her own feeder.

Protocol:

1. Fit a new Milk Bar™ Teat to your single feeder.
2. Either number or colour code the feeder and the hutch.  
This feeder stays with this calf until weaning.
3. After weaning, replace the old, worn teat with a new Milk Bar™ Teat ready for the next calf.



# Pairs or Groups from Day 1

There is a lot of work being done around housing calves in twos from day one.

This system is often referred to as the Buddy System.

Studies in the US and Canada show improvements in feed and weight uptake and the cognitive development in calves raised in pairs.

The biggest drawback for calves in twos or groups is that if they are fed from a bucket or a fast flow teat, they cross suckle vigorously. The damage cross suckling causes can have a long term impact to the calf's future production capability so it is especially important they are fed with a Milk Bar™ Teat from Day 1 until weaning to control the flow.

Protocol:

1. Fit new Milk Bar™ Teats to two single feeders or a Milk Bar™ 2 Compartment.
2. Either number or colour code the feeder and the hutch.  
This feeder stays with these calves until weaning, or until they transition into a larger group.
3. If you move them to a larger group, use the Follow the Teat System and transfer the Milk Bar™ Teats from the Milk Bar™ 2 Compartment to the larger group feeder.



## TIP! The importance of One Teat for One Calf

Milk Bar™ Teats are scientifically formulated to replicate the correct milk flow and suckling action.

Calves produce maximum saliva to boost immunity and improve digestion.

Using a Milk Bar™ Teat for more than one calf softens the rubber and calves can drink too quickly.

Calves that drink too quickly cross suckle after feeding and suffer from nutritional diarrhoea and poor weight gains.

Follow the Teat from birth to weaning to make raising healthy calves easy.







NZ Pat Apps 757655 & 767633 & 727000. NZ Des Reg. 420972 PCT  
Patent Applications NZ2016/050190 & NZ2020/050110 International  
Patents and Designs pending or apply.

# Milk Bar™ Lamb & Kid Teats

Milk Bar™ Lamb & Kid Teats work in harmony with the digestive system to improve animal health.

The specialised flow control helps saliva to form to boost immunity and strengthen digestion.

Improved digestion produces heavier, more robust lambs and kids.

Controlled flow prevents gorging to reduce bloat.

Pull through design for greater hygiene.



## Milk Bar™ Lamb/ Kid Training Teat

Code 900400

Quantity: 10 per pack

Specifically formulated to support young, weak animals.

For training, use a Milk Bar™ Training Teat for the first few feeds. After a few days, move lambs & kids to the Milk Bar™ Teat for continued health benefits.



## Milk Bar™ Lamb/ Kid Automatic Teat

Code 900620

Quantity: 10 per pack

Fits automatic feeders with a 38 mm teat station.

Controls the flow for exceptional results.



## Milk Bar™ Lamb/ Kid Teat

Code 900200

Quantity: 10 per pack

Code 900210

Quantity: 100 per pack

For best results, lambs and kids should nurse and suckle at the correct speed right through to weaning.

Insert new Milk Bar™ Lamb & Kid Teats into feeders at the start of the season.

Saliva has antimicrobial properties that boosts immunity and is produced through suckling with a controlled flow of milk. The controlled flow allows the digestive system to function and the milk to correctly curd to reduce the problems of diarrhoea and bloat.



# Milk Bar™ Lamb & Kid Feeders

Feeders come with either large cut out handles, or secure finger grips, or both.

Easy to clean with sleek lines. No threads, no valves to trap milk or interfere with milk flow.

Low teat channel reduces milk waste.

Milk Bar™ Lamb & Kid feeders come fully assembled with teats fitted and ready to use.

## Milk Bar™ Lamb/ Kid Bottle

Code 928100

Volume: 3 L

Weight: 600 gms

Length: 350 mm

Height: 150 mm

Width: 120 mm

Handle: Carry handle



## Milk Bar™ Lamb/ Kid 1

Code 928200

Volume: 3 L

Weight: 700 gms

Length: 210 mm

Height: 210 mm

Width: 210 mm

Hooks: Moulded 25mm

Handle: Finger grips

Lid available



## Milk Bar™ Lamb/ Kid 3

Code 928300

Volume: 3 L

Weight: 700 gms

Length: 210 mm

Height: 210 mm

Width: 210 mm

Hooks: Moulded 25mm

Handle: Finger grips

Lid available



## Milk Bar™ Lamb/ Kid 7

Code 928400

Volume: 15 L

Weight: 2 kg

Length: 300 mm

Height: 360 mm

Width: 300 mm

Hooks: Moulded 25-40mm

Handle: Carry handle



## Milk Bar™ Lamb/ Kid 10

Code 928500

Volume: 36 L

Weight: 3 kg

Length: 700 mm

Height: 400 mm

Width: 300 mm

Hooks: Ezi Lock

Handle: Finger grips

Lid available



## Milk Bar™ Lamb/ Kid 20

Code 928525

Volume: 100 L

Weight: 10 kg

Length: 2.12 m

Height: 330 mm

Width: 200 mm

Hooks: Aluminium

Handle: Finger grips



Available on request

### Milk Bar™ Lamb/ Kid 30

Code 928900

Volume: 120 L

Weight: 12 kg

Diameter: 900 mm

Height: 600 mm

Brilliant for large groups, the solid base keeps the feeder secure even with 30 animals pushing it around!



## Compartment Feeders

### Milk Bar™ Lamb/ Kid 5 Compartment

Code 928600

Volume: 300 ml ea

Weight: 2 kg

Length: 680 mm

Height: 180 mm

Width: 170 mm

Hooks: Ezi Lock

Handle: Finger grips



### Milk Bar™ Lamb/ Kid 10 Compartment

Code 928650

Volume: 300 ml ea

Weight: 3.4 kg

Length: 1.3 m

Height: 210 mm

Width: 170 mm

Hooks: Ezi Lock

Handle: Finger grips



## Ad Lib Feeders

Small, frequent meals can be beneficial to lambs and kids, but leaving feeders in pens can be a problem as they love to bite the teats leading to milk loss. The higher teat placement stops teats leaking when they are bitten.

### Milk Bar™ Lamb/ Kid Ad Lib 9

Code 929600

Volume: 15 L

Weight: 3 kg

Length: 700 mm

Height: 400 mm

Width: 300 mm

Hooks: Ezi Lock

Handle: Finger grips

Lid Available.



### Milk Bar™ Lamb/ Kid Ad Lib 27

Code 928526

Volume: 142 L

Weight: 9 kg

Diameter: 900 mm

Height: 600 mm

Stable base keeps it secure.



**User TIP!** Kids have sharp teeth and like to bite teats causing damage and regular teat replacements. Choosing feeders with extra teat spaces reduces biting so the teats last longer.



Patent Number FR14/61328

# Milk Bar™ Teat Separators

The Milk Bar™ Teat Separator connects Milk Bar™ Lamb/ Kid Automatic Teats to Automatic Feeders.

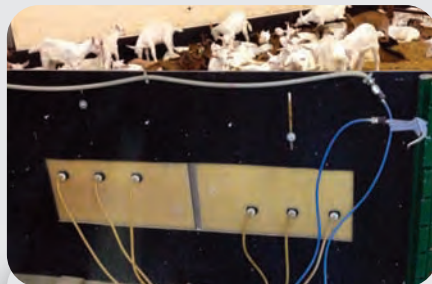
Controlled milk flow to reduce bloat ease digestive problems.

Adjustable teat height.

Teats are protected from biting to reduce teat replacements.



Slide the separators into place. Adjust the teat height so lambs & kids drink at the correct height and speed until weaning.



Attach the board to the side of the pen and connect the teats to the automatic feeder.



Teats are protected from biting and lambs have a secure channel to drink from.

## Milk Bar™ Teat Separator for Kids

Available in 2, 3 or 4 teat stations, the Milk Bar™ Teat Separator for kids comes complete with fittings and teats.

### 2 Teats

Code: 929510

### 3 Teats

Code: 929500

### 4 Teats

Code: 929520



## Milk Bar™ Teat Separator for Lambs

The Milk Bar™ Teat Separator for lambs has a wider channel to accommodate larger lambs heads.

### 2 Teats

Code: 929705

### 3 Teats

Code: 929700

### 4 Teats

Code: 929710

